



**India Meteorological Department
(Ministry of Earth Sciences)**

NATIONAL BULLETIN NO. 6 (BOB/06/2024)

TIME OF ISSUE: 0940 HOURS IST

DATED: 23.10.2024

FROM: INDIA METEOROLOGICAL DEPARTMENT (FAX NO. 24643965/24699216/24623220)

**TO: CONTROL ROOM, NDM, MINISTRY OF HOME AFFAIRS (FAX.NO. 23093750)
CONTROL ROOM NDMA (FAX.NO. 26701729)
CABINET SECRETARIAT (FAX.NO.23012284, 23018638)
PS TO HON'BLE MINISTER FOR S & T AND EARTH SCIENCES (FAX NO.23316745)
SECRETARY, MOES (FAX NO. 24629777)
H.Q. (INTEGRATED DEFENCE STAFF AND CDS) (FAX NO. 23005137/23005147)
DIRECTOR GENERAL, DOORDARSHAN (23385843)
DIRECTOR GENERAL, AIR (23421105, 23421219)
PIB MOES (FAX NO. 23389042)
UNI (FAX NO. 23355841)
D.G. NATIONAL DISASTER RESPONSE FORCE (NDRF) (FAX NO. 26105912, 2436 3260)
DIRECTOR, PUNCTUALITY, INDIAN RAILWAYS (FAX NO. 23388503)
CHIEF SECRETARY, ODISHA (FAX NO. 0674-2536660)
CHIEF SECRETARY, WEST BENGAL (FAX NO. 033-22144328)
CHIEF SECRETARY, ANDAMAN & NICOBAR ISLANDS (FAX NO. 03192-232656)
CHIEF SECRETARY, TAMIL NADU (FAX NO. 044-25672304)
CHIEF SECRETARY, ANDHRA PRADESH (FAX NO. 0863-2441029)
CHIEF SECRETARY, PUDUCHERRY (FAX NO. 0413-2334145)**

Subject: Cyclonic storm over eastcentral Bay of Bengal (Cyclone Alert for Odisha and West Bengal coasts: **Orange Message)**

Yesterday's deep depression over Eastcentral Bay of Bengal moved west-northwestwards with a speed of 18 kmph during past 6 hours, intensified into a cyclonic storm "DANA" (pronounced as Dana), and lay centred at 0530 hours IST of today, the 23rd October, over the same region near latitude 16.3° N and longitude 89.9°E, about 560 km southeast of Paradip (Odisha), 630 km south-southeast of Sagar Island (West Bengal) and 630 km south-southeast of Khepupara (Bangladesh).

It is very likely to move northwestwards and intensify into a severe cyclonic storm over northwest Bay of Bengal by early morning of 24th and cross north Odisha and West Bengal coasts between Puri and Sagar Island during night of 24th to morning of 25th October, 2024 as a severe Cyclonic Storm with a wind speed of 100-110 kmph gusting 120 kmph.

Forecast track and intensity are given in the following table:

Date/Time (IST)	Position (Lat. °N/ Long. °E)	Maximum Sustained Surface Wind Speed (Kmph)	Category Of Cyclonic Disturbance
23.10.24/0530	16.3/89.9	60-70 gusting to 80	Cyclonic Storm
23.10.24/1130	16.8/89.3	70-80 gusting to 90	Cyclonic Storm
23.10.24/1730	17.4/88.8	80-90 gusting to 100	Cyclonic Storm
23.10.24/2330	18.1/88.4	90-100 gusting to 110	Cyclonic Storm
24.10.24/0530	18.8/88.1	100-110 gusting to 120	Severe Cyclonic Storm
24.10.24/1730	20.0/87.4	100-110 gusting to 120	Severe Cyclonic Storm
25.10.24/0530	20.9/86.9	100-110 gusting to 120	Severe Cyclonic Storm
25.10.24/1730	21.5/86.1	80-90 gusting to 100	Cyclonic Storm
26.10.24/0530	21.7/85.3	45-55 gusting to 85	Depression

(i) Rainfall Warning:

- ❖ Light to moderate rainfall at most places with **heavy rainfall (07-11 cm)** at isolated places is very likely over **Balasore, Bhadrak, Kendrapara, Jagatsingpur, Puri and Khorda**, districts of Odisha commencing from evening of 23rd Oct. & **heavy to very heavy rainfall** at a few places and **extremely heavy rainfall (≥ 21 cm)** at isolated places over **Baleswar, Mayurbhanj, Bhadrak, Kendrapara, Jagatsingpur Kendujhar, Jajpur, Cuttack and Dhenkanal, Khorda and Puri** districts of Odisha on 24th & 25th October.
- ❖ **Light to moderate rainfall at most places with heavy rainfall** at isolated places is very likely on 23rd October and heavy to very heavy rainfall at a few places with **extremely heavy rainfall** at isolated places over **South & North 24 Parganas, East & West Medinipur, Jhargram, Howrah, Hooghly, Kolkata and Bankura** districts of Gangetic West Bengal on 24th & 25th October.
- ❖ Light to moderate rainfall at most places is likely over south Jharkhand with **heavy rainfall** at isolated places on 24th and **heavy to very heavy rainfall** at isolated places on 25th October.

(ii) Wind Warning:

Eastcentral Bay of Bengal: Squally wind speed reaching 60-70 kmph gusting to 80 kmph is prevailing and likely to increase becoming 70-90 kmph gusting to 100 kmph from 23rd evening till 24th morning. It is likely to decrease thereafter.

Adjoining areas of Westcentral Bay of Bengal: Squally wind speed reaching 60-70 kmph gusting to 80 kmph is prevailing. It is likely to increase gradually becoming 80-90 kmph gusting to 100 kmph from 23rd afternoon and 90-100 kmph gusting to 110 kmph from 24th morning till 24th afternoon. It is likely to decrease thereafter.

Northwest Bay of Bengal: Squally wind speed reaching 40-50 kmph gusting to 60 kmph is prevailing. It is very likely to increase gradually becoming gale wind speed reaching 70-90 kmph gusting to 100 kmph from 23rd evening till 24th night and thereafter 100-110 kmph gusting to 120 kmph till 25th Oct morning. It is likely to decrease gradually thereafter.

Adjoining areas of northeast Bay of Bengal: Squally wind speed reaching 40-50 kmph gusting to 60 kmph is very likely to commence from 23rd night, becoming 50-60 kmph gusting to 70 kmph from 24th till 25th morning and decrease gradually thereafter.

Along & off Odisha-west Bengal coasts: Squally wind speed reaching 40-50 gusting to 60 kmph is very likely to commence from 23rd Oct evening. It would gradually increase becoming gale wind speed reaching 60-70 kmph gusting to 80 kmph from 24th morning and reaching 100-110 kmph gusting to 120 kmph from 24th night till 25th Oct morning and decrease gradually thereafter.

(iii) Sea Condition:

Eastcentral Bay of Bengal: Sea condition is likely to be **high till 24th October evening** and improve gradually thereafter.

Adjoining areas of Westcentral Bay of Bengal: Sea condition is likely to be **very Rough to high** on 23rd and **high** till 24th October **evening**. It is likely to improve gradually thereafter.

Northwest Bay of Bengal: Sea condition is likely to be **Very Rough till 23rd evening** and would become **High to Very High** from 23rd night till 25th morning and improve gradually thereafter.

Adjoining areas of northeast Bay of Bengal: Sea condition is likely to be **Rough to Very Rough** from 23rd night till 25th morning and improve gradually thereafter.

Along & off Odisha-west Bengal coasts: Sea condition is likely to be **Rough to Very Rough** from 23rd **evening** and would become **High to Very High** from 24th October **morning to 25th Oct forenoon** and improve gradually thereafter.

(iv) Fishermen Warning:

Fishermen are advised not to venture into

- Eastcentral Bay of Bengal during 23rd to 24th October.
- **Adjoining areas of Westcentral Bay of Bengal on 23rd and 24th Oct.**
- **Northwest & adjoining northeast Bay of Bengal and along & off Odisha, West Bengal and Bangladesh coasts** during 23rd to 25th October.

(v) Storm surge warning:

Storm surge is likely to be 1.0 to 2.0 m height above astronomical tide and likely to inundate low lying areas of Kendrapara, Bhadrak and Balasore districts of Odisha and East Medinipur districts of West Bengal during the time of landfall.

❖ Impact Expected over districts of Odisha (Baleswar, Bhadrak, Kendrapara, Jagatsinghpur, Puri, Khorda, Mayurbhanj, Kendujhar, Jajpur, Cuttack, Dhenkanal) and West Bengal (South & North 24 Parganas, East & West Medinipur, Jhargram, Howrah, Hooghly, Kolkata, & Bankura)

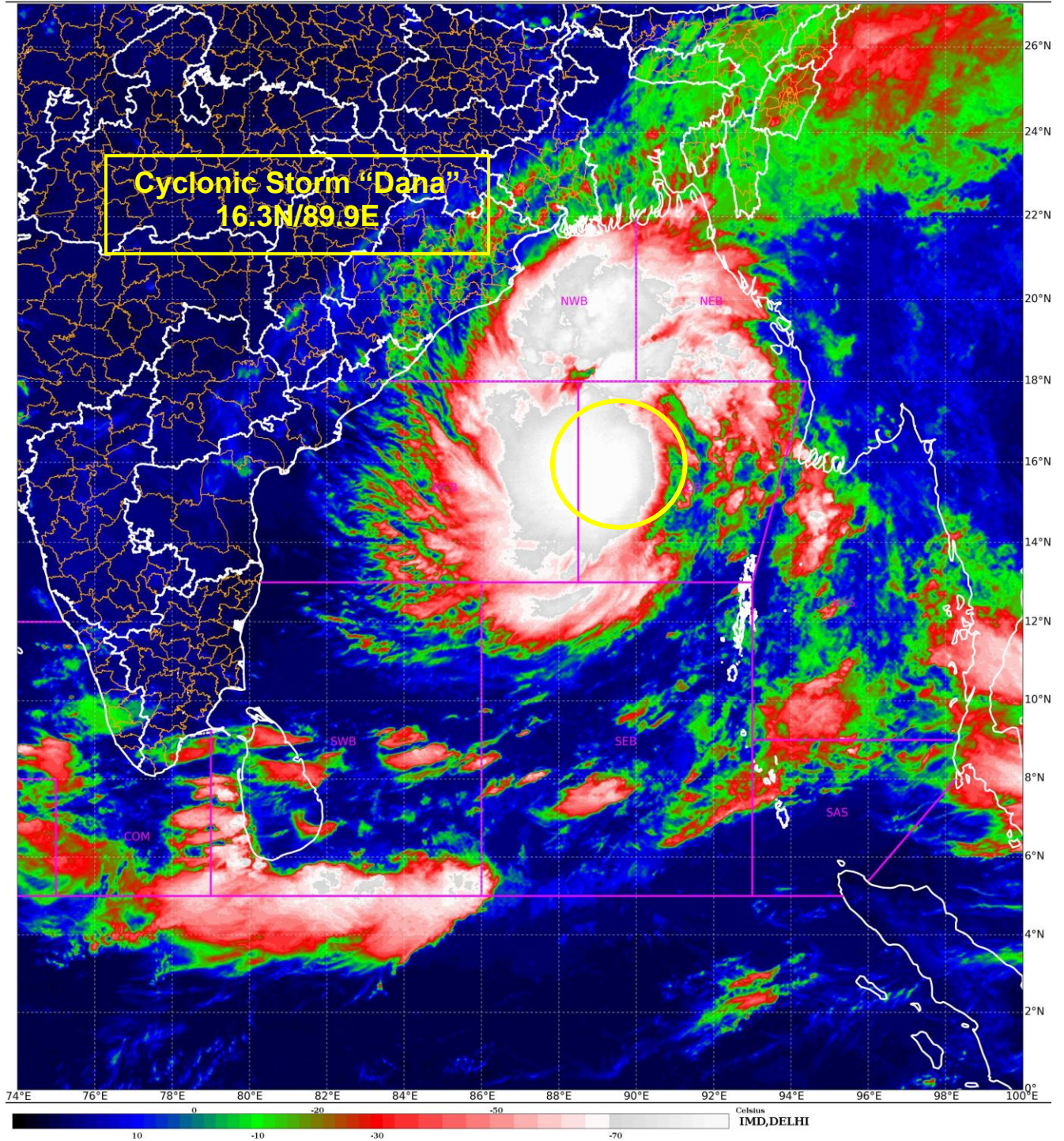
- Major damage to thatched houses/ huts. Roof tops may blow off. Unattached metal sheets may fly.
- Breaking of tree branches and uprooting of trees.
- Damage to power and communication lines.
- Major damage to Kutcha and some damage to Pucca roads. Flooding of escape routes.
- Possibilities of damage to vulnerable structure.
- Major damage to banana and papaya trees. Large dead limbs blown from trees.
- Damage to horticulture and standing crops due to inundation and wind.
- Damage to embankments/ salt pans.
- Localized Flooding of roads, water logging in low lying areas and closure of underpasses mainly in urban areas of the above region.

- Occasional reduction in visibility due to heavy rainfall.
 - Disruption of traffic in major cities and roadways due to water logging in roads and poor visibility due to heavy rain leading to increased travel time and incidents
 - Localized Landslides/Mudslides/landslips/mud slips/land sinks/mud sinks.
 - Likely disruption of marine and inland water transportation like small boats and trawlers.
 - It may lead to riverine flooding in some river catchments (for riverine flooding please visit Webpage of Central Water Commission)
- ❖ **Action Suggested for districts of Odisha (Baleswar, Bhadrak, Kendrapara, Jagatsinghpur, Puri, Khorda, Mayurbhanj, Kendujhar, Jajpur, Cuttack, Dhenkanal) and West Bengal (South & North 24 Parganas, East & West Medinipur, Jhargram, Howrah, Hooghly, Kolkata & Bankura)**
- Total suspension of fishing operations during 23rd to 25th Oct over Central and North Bay of Bengal.
 - Fishermen are advised not to venture into
 - ✓ Eastcentral Bay of Bengal during 23rd to 24th October.
 - ✓ **Adjoining areas of Westcentral Bay of Bengal on 23rd and 24th Oct.**
 - ✓ **Northwest and adjoining northeast Bay of Bengal and along & off Odisha, West Bengal and Bangladesh coasts** during 23rd to 25th October morning.
 - Movement in motor boats unsafe
 - Coastal hutment dwellers to be moved to safer places.
 - People in affected areas to remain indoors.
 - Judicious regulation of onshore/offshore, Port and maritime activities including shipping.
 - Judicious regulation of tourism activities in coastal areas.
 - Judicious regulation of surface transports including railways and roadways.
 - Check for traffic congestion on your route before leaving for your destination.
 - Follow any traffic advisories that are issued in this regard.
 - Avoid going to areas that face the water logging problems often.
 - Avoid staying in vulnerable structure.

Next bulletin will be issued at 1200 hours IST of today, the 23rd October, 2024.

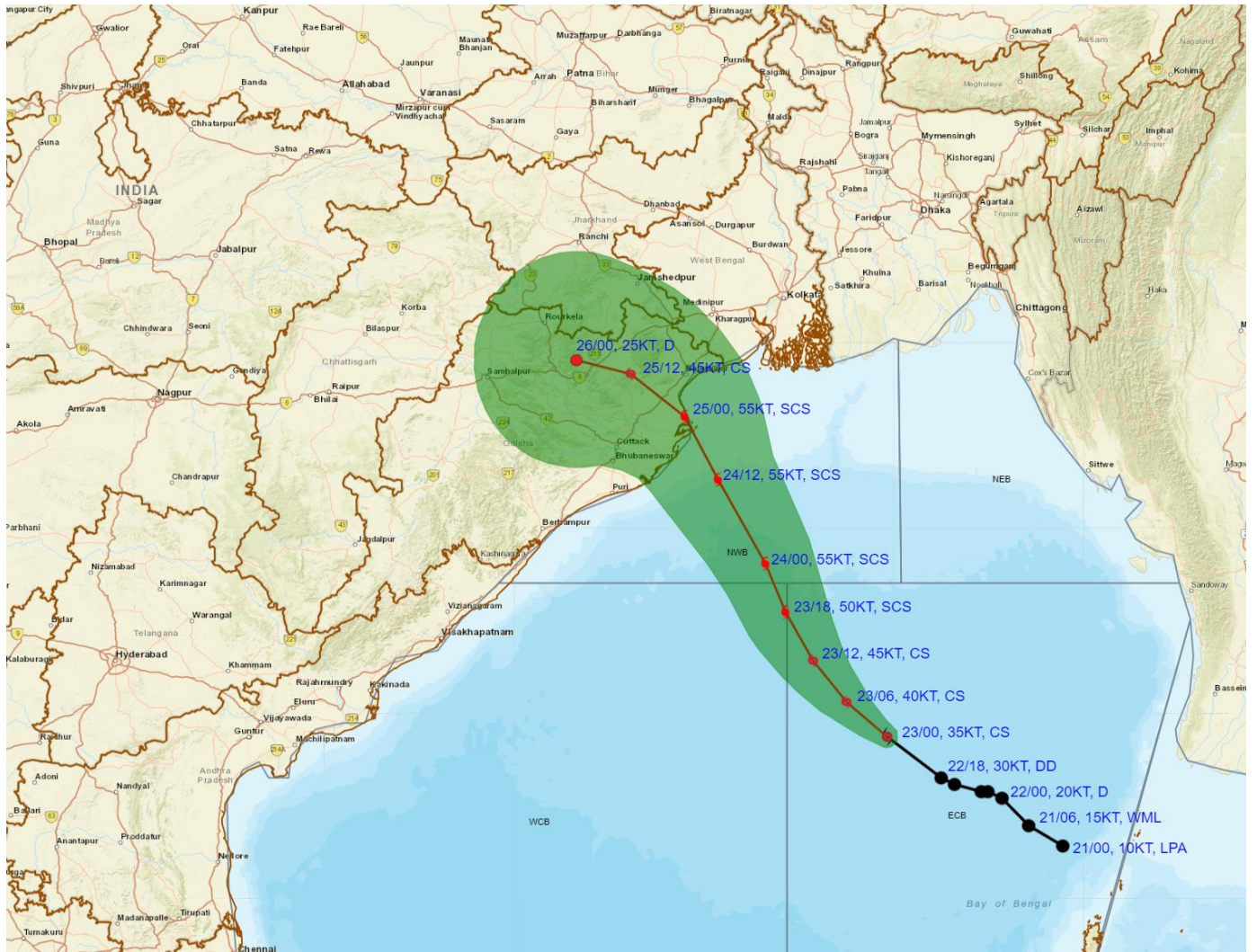
(Ananda Kumar Das)
Scientist-F, RSMC & IMD, New Delhi

Copy to: ACWC Kolkata/ACWC Chennai/CWC Bhubaneswar/CWC Vishakhapatnam/Meteorological Centre Port Blair





OBSERVED AND FORECAST TRACK ALONGWITH CONE OF UNCERTAINTY OF CYCLONIC STORM 'DANA' OVER EASTCENTRAL BAY OF BENGAL BASED ON 0000 UTC (0530 Hrs. IST) OF 23RD OCTOBER 2024

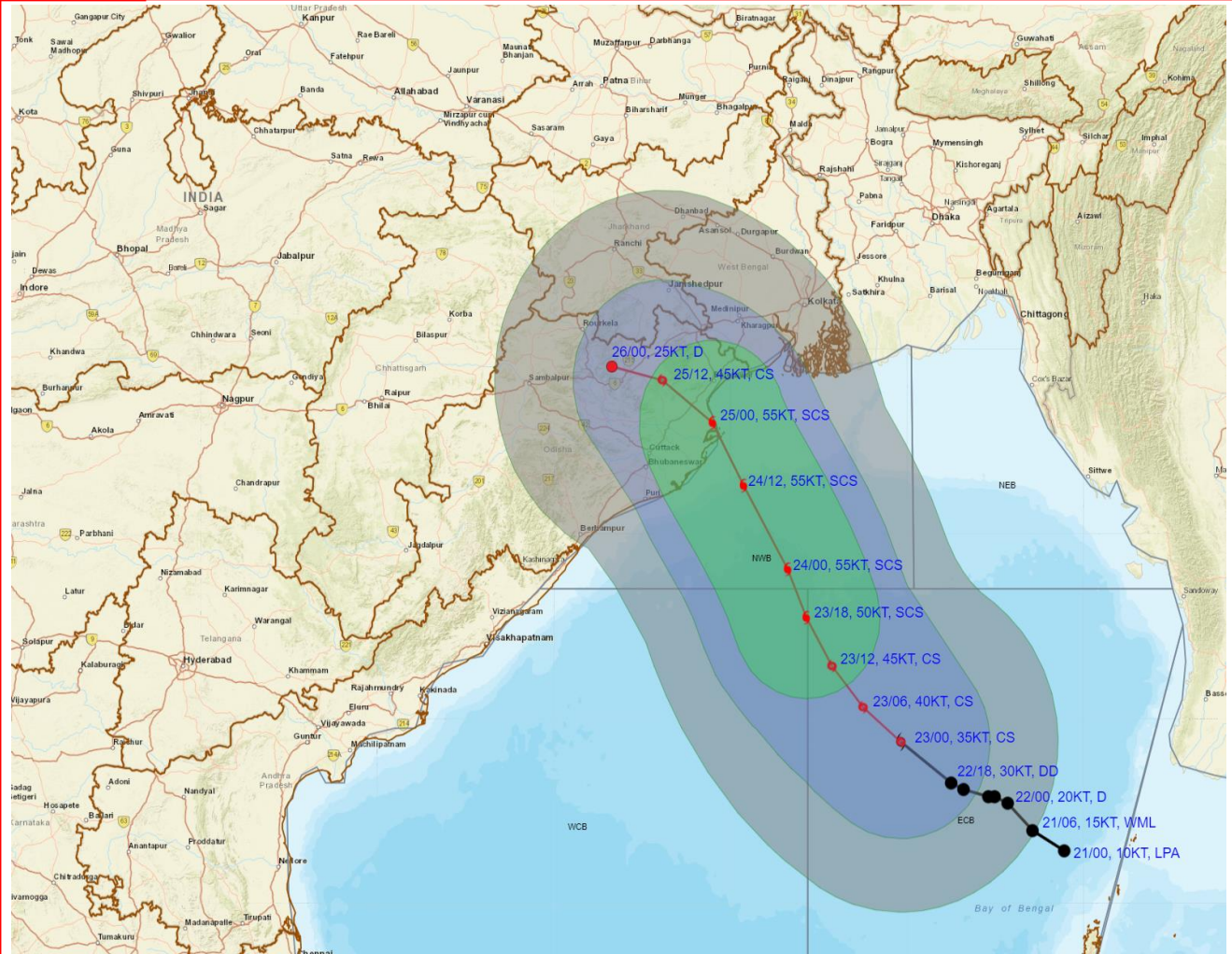


DATE/TIME : IN UTC
IST : UTC + 0530
KT : NAUTICAL MILE S/HOUR = 1.85 KM/HOUR
LPA : LOW PRESSURE AREA
WML : WELL MARKED LOW PRESSURE AREA
D : DEPRESSION (17-27KT)
DD : DEEP DEPRESSION (28-33 KT)
CS : CYCLONIC STORM (34-47 KT)
SCS : SEVERE CYCLONIC STORM (48-63 KT)
VSCS : VERY SEVERE CYCLONIC STORM (64-89 KT)
ECS : EXTREMELY SEVERE CYCLONIC STORM (90-119 KT)
SuCS : SUPER CYCLONIC STORM (≥120 KT)

LESS THAN 34 KT
 34-47 KT
 ≥ 48 KT
 OBSERVED TRACK
 FORECAST TRACK
 CONE OF UNCERTAINTY



OBSERVED AND FORECAST TRACK ALONGWITH QUADRANT WIND DISTRIBUTION OF CYCLONIC STORM 'DANA' OVER EASTCENTRAL BAY OF BENGAL BASED ON 0000 UTC (0530 Hrs. IST) OF 23RD OCTOBER 2024

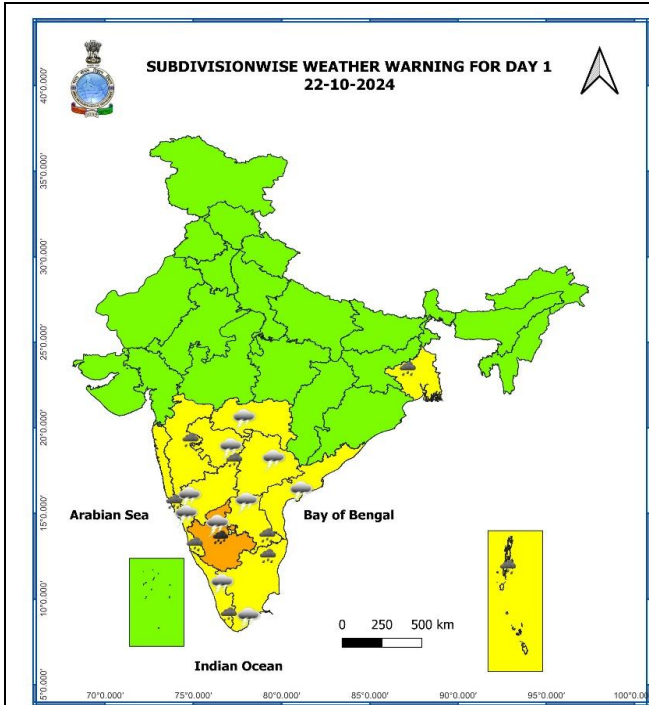


DATE/TIME : IN UTC
IST : UTC + 0530
KT : NAUTICAL MILE S/HOUR = 1.85 KM/HOUR
LPA : LOW PRESSURE AREA
WML : WELL MARKED LOW PRESSURE AREA
D : DEPRESSION (17-27 KT)
DD : DEEP DEPRESSION (28-33 KT)
CS : CYCLONIC STORM (34-47 KT)
SCS : SEVERE CYCLONIC STORM (48-63 KT)
VSCS : VERY SEVERE CYCLONIC STORM (64-89 KT)
ESCS : EXTREMELY SEVERE CYCLONIC STORM (90-119 KT)
SuCS : SUPER CYCLONIC STORM (≥120 KT)

● LESS THAN 34 KT
 ○ 34.47 KT
 ○ ≥ 48 KT
 — OBSERVED TRACK
 — FORECAST TRACK
 — CONE OF UNCERTAINTY
AREA OF MAXIMUM SUSTAINED WIND SPEED:
 ■ 28-33 KT (52-61 KMPH)
 ■ 34.49 KT (62-91 KMPH)
 ■ 50-63 KT (92-117 KMPH)
 ■ ≥ 64 KT (≥ 118 KMPH)

IMPACT OVER THE SEA

MSW (knot/kmph)	Impact	Action
28-33 (52-61)	Very rough seas	Total suspension of fishing operations
34-49 (62-91)	High to very high seas	Total suspension of fishing operations
50-63 (92-117)	Very high seas	Total suspension of fishing operations
≥ 64 (≥118)	Phenomenal	Total suspension of fishing operations



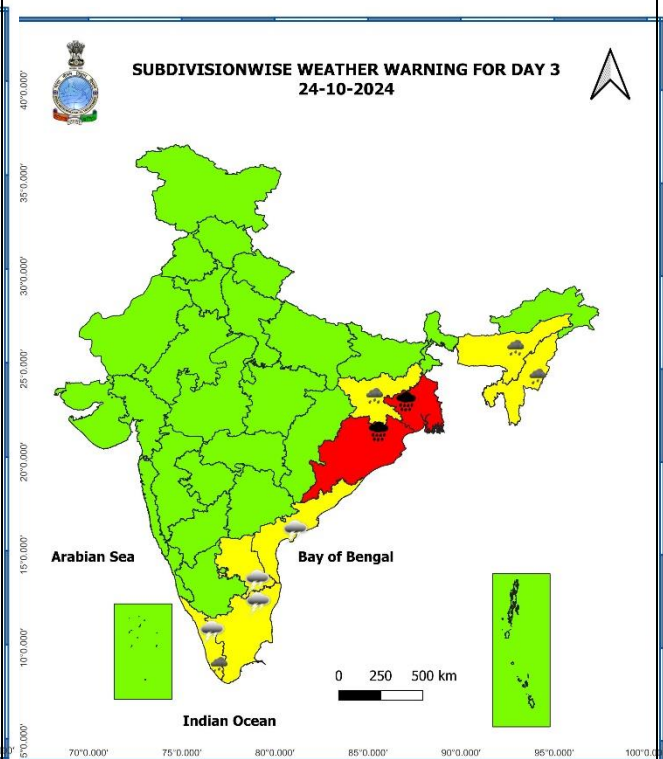
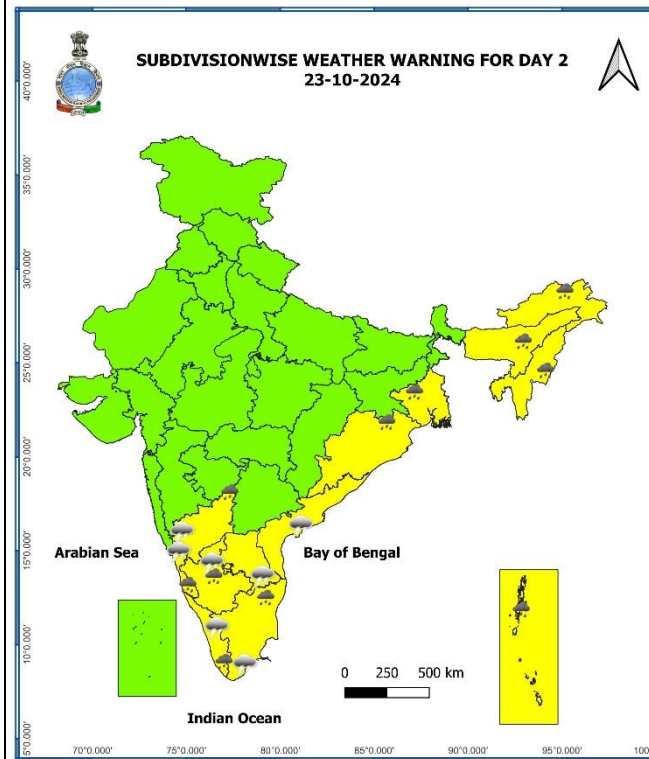
- Heavy Rain
- Very Heavy Rain
- Extremely Heavy Rain

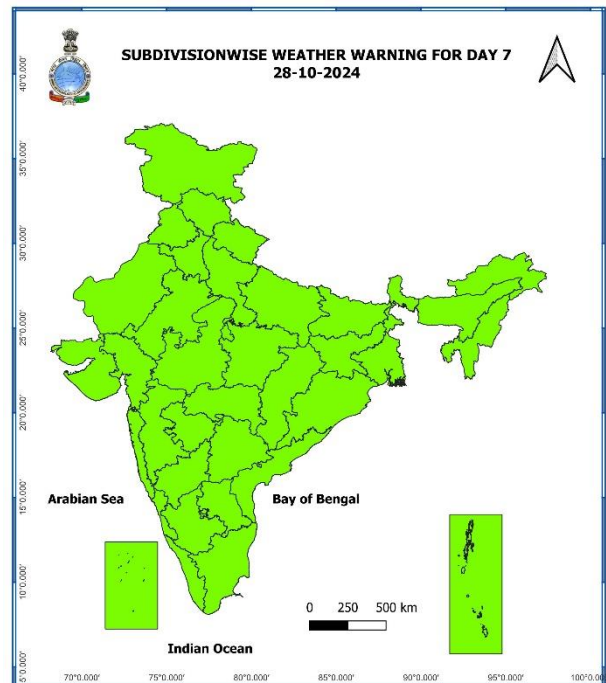
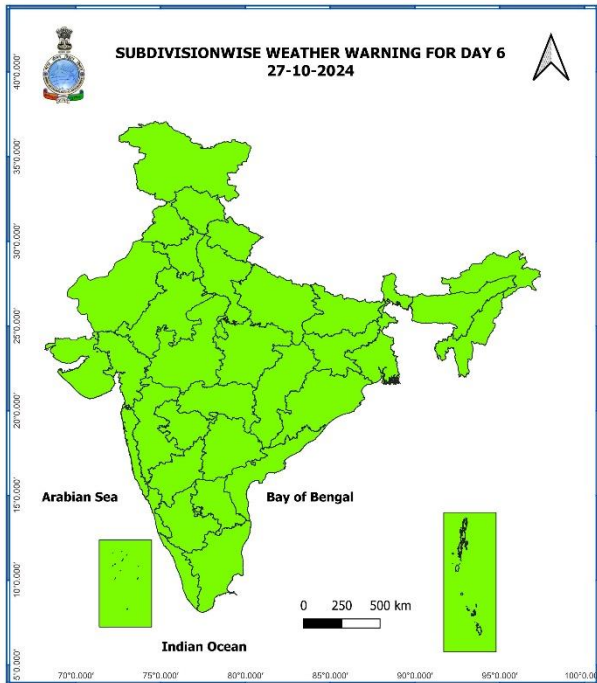
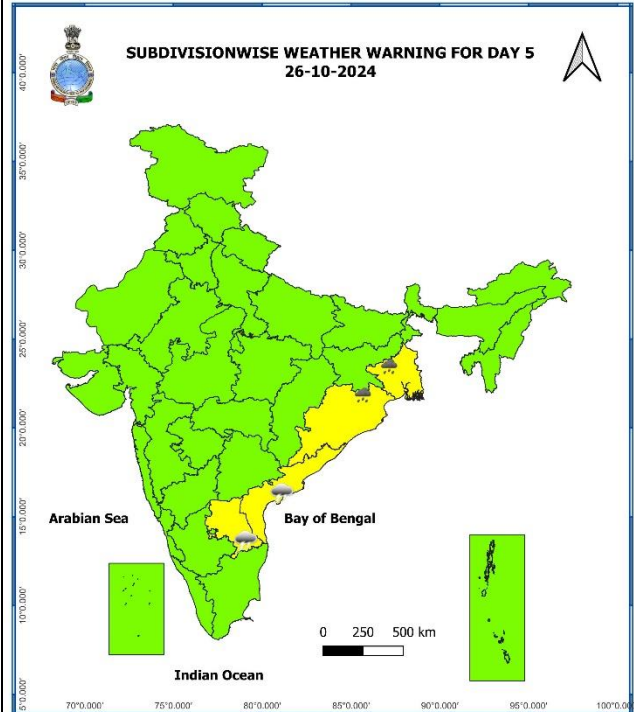
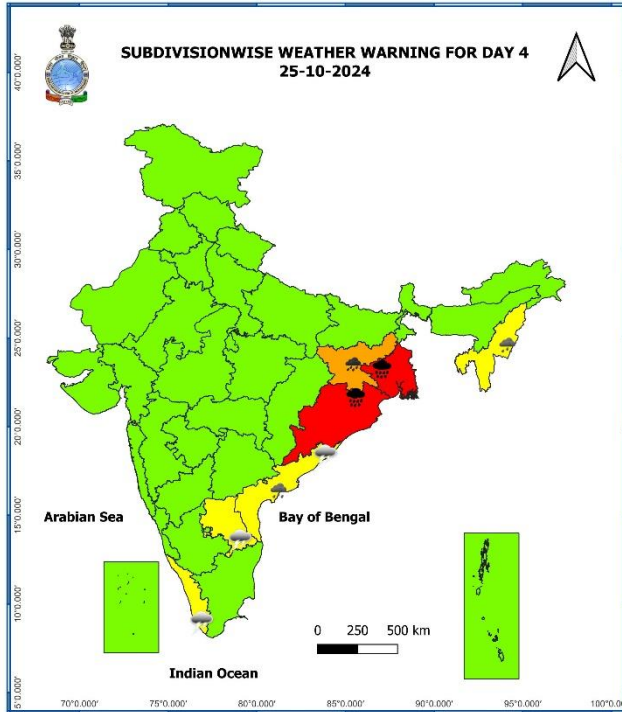
COLOUR CODED WARNING

- No Warning (No Action)
- Watch (Be Aware)
- Alert (Be Prepared To Take Action)
- Warning (Take Action)

Probabilistic Forecast

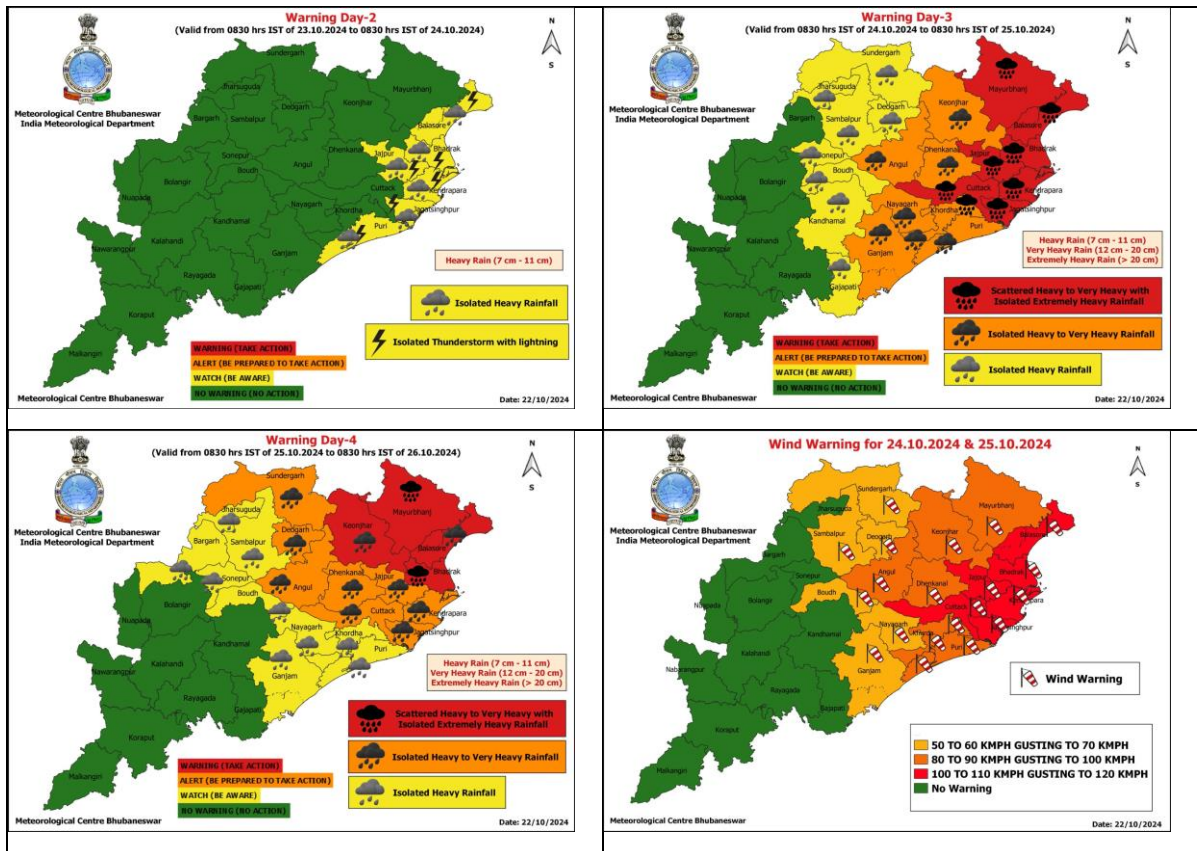
Terms	Probability of Occurrence (%)
Unlikely	< 25
Likely	25 - 50
Very Likely	50 - 75
Most Likely	> 75



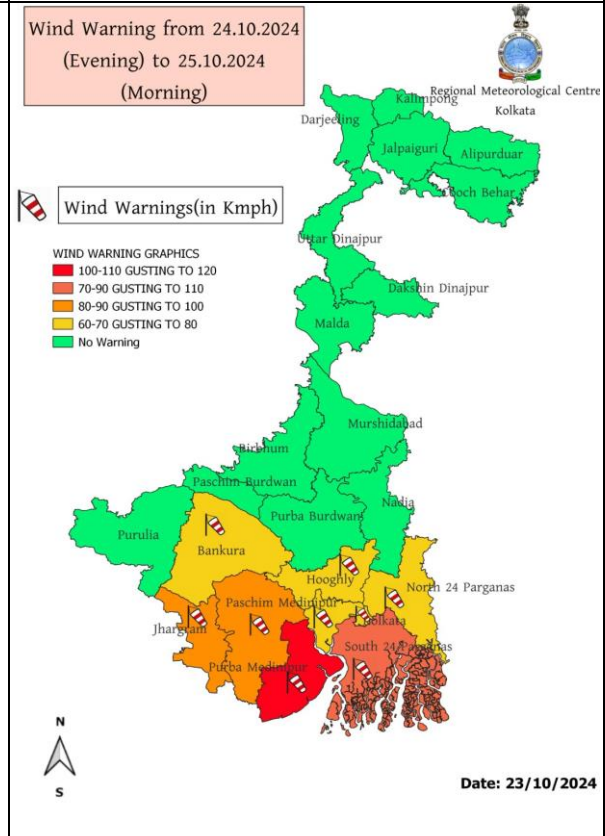
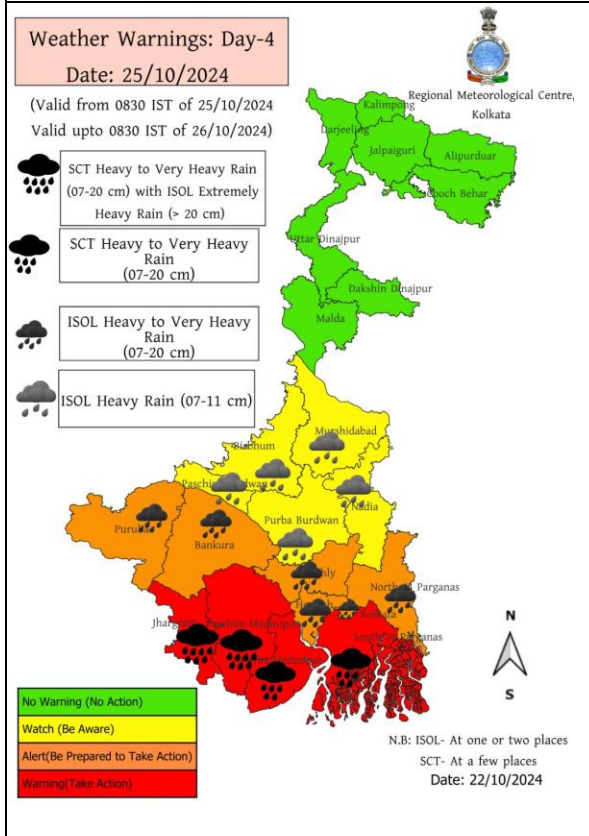
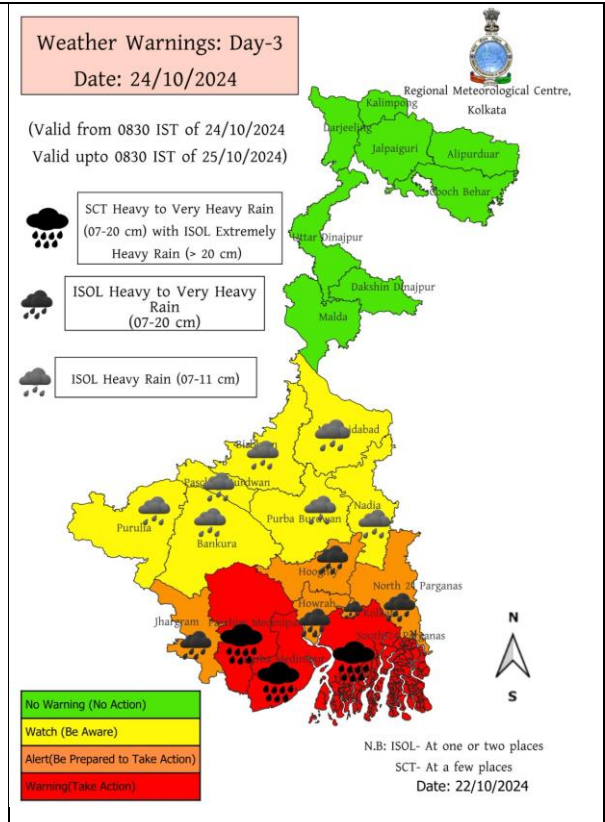
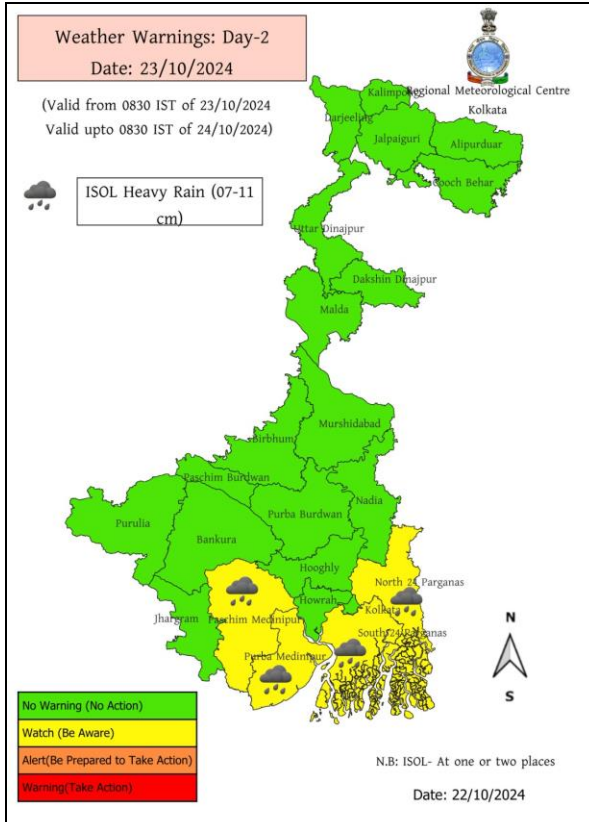


- Action may be taken based on **ORANGE AND RED** COLOUR warnings.
- Vulnerable regions likely urban and hilly areas action may be initiated for heavy rainfall warning.
- As the lead period increases forecast accuracy decreases.

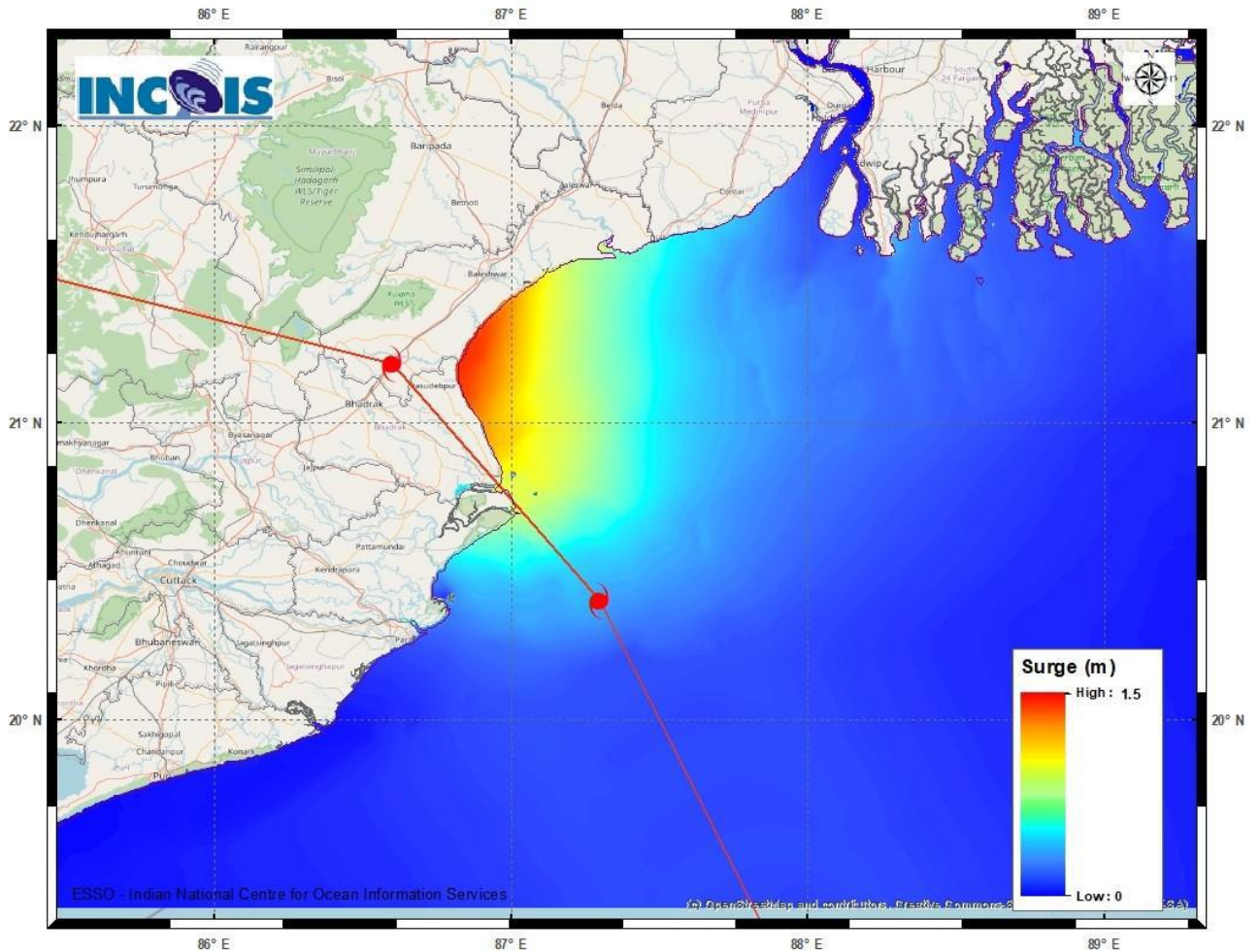
District-wise Warning of Odisha



District-wise Warning of West Bengal

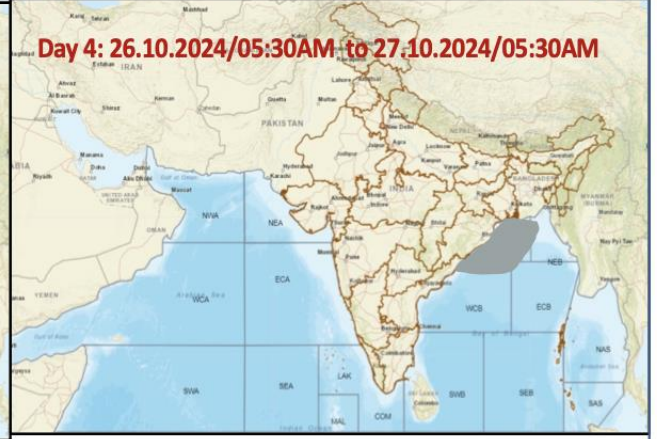
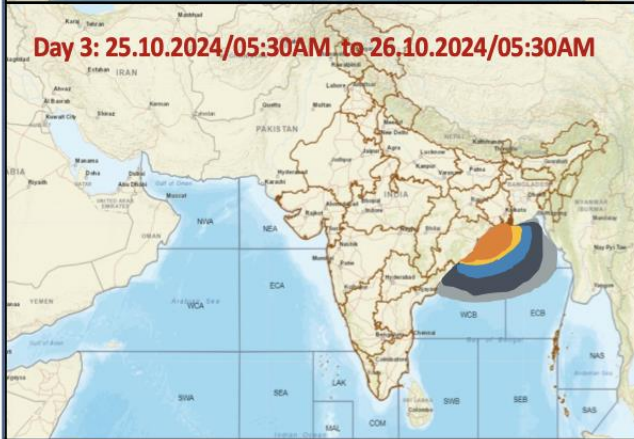
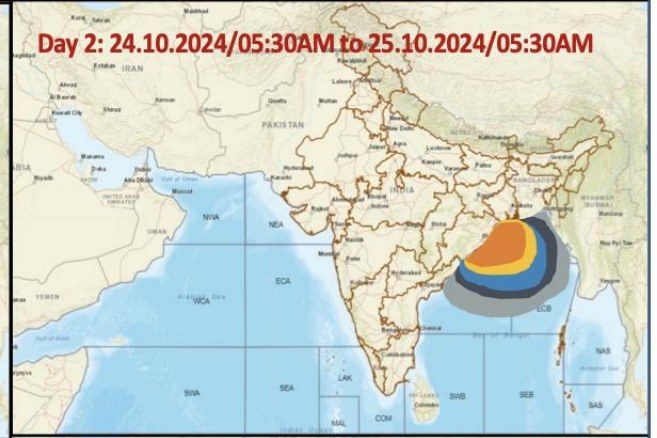
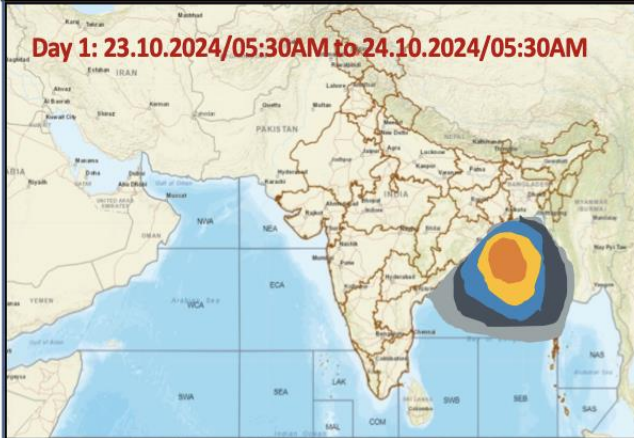


Storm Surge warning graphics



DISTRICT	STATE / UNION TERRITORY	NEAREST PLACE OF HABITATION	STORM SURGE (m)*	EXPECTED INUNDATION EXTENT (km)
Baleshwar	Odisha	Kumbhargari	0.5-1.5	Upto 0.92
Bhadrak	Odisha	Mohanpur	0.8-1.4	Upto 0.82
Kendrapara	Odisha	Tikayat Nagar	0.2-0.9	Upto 3.01
Purba Medinipur	West Bengal	Dakshin Purushottampur	0.4-0.6	Upto 0.98

Fishermen Warning Graphics



	Squally Weather with wind speed 35-45 kmph gusting to 55 kmph
	Squally wind with speed 45-55 kmph gusting to 65 kmph
	Squally winds with speed 50-60 kmph gusting to 75 kmph
	CS with Gale winds with speed 60-90 kmph gusting to 110 kmph
	SCS with Gale wind speed 90-120 kmph gusting to 135 kmph

Fishermen are advised not to venture into the marked areas.